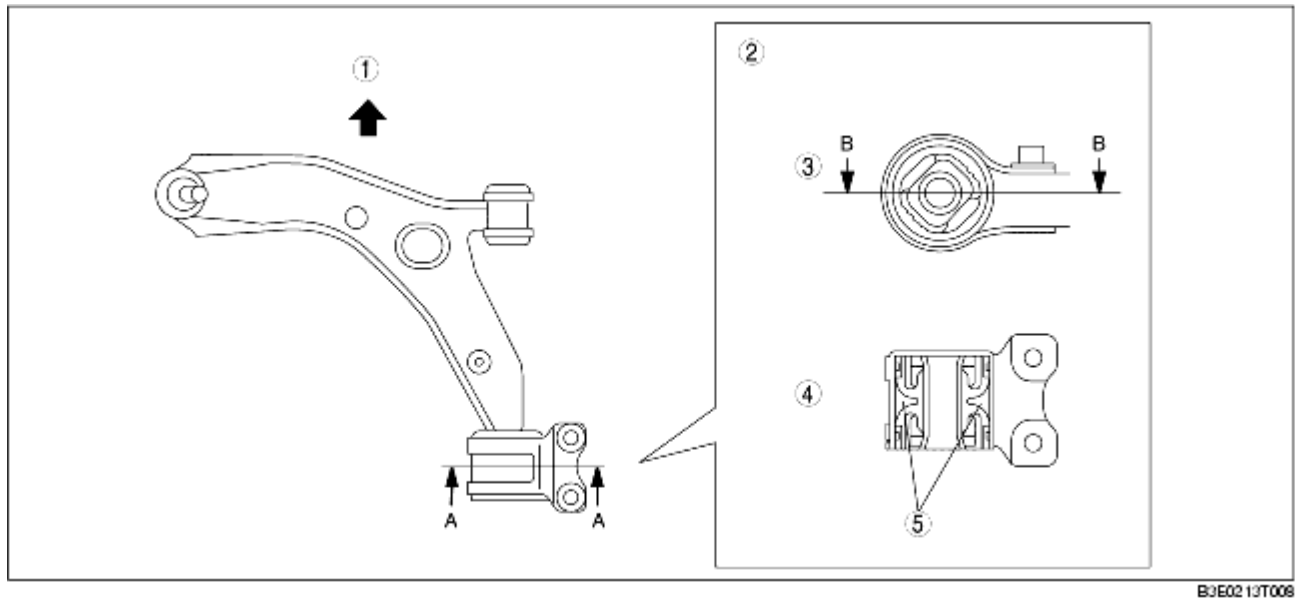


## FRONT LOWER ARM CONSTRUCTION

B3E021334300T01

- An oil-filled bushing has been adopted for the backside of the front lower arm. Due to this, superior handling stability and riding comfort, and low NVH (Noise, Vibration, Harshness) have been achieved.



B3E0213T008

1	Front of the vehicle
2	Front lower arm bushing
3	Cross-sectional view SEC. A-A
4	Cross-sectional view SEC. B-B
5	Oil